



THE LIME NETWORK
Leaders in Indigenous Medical Education

Reference Group Member Biographies



Central to the success of the Leaders in Indigenous Medical Education (LIME) Network is the [Reference Group](#), consisting of medical educators from each medical school in Australia and Aotearoa/New Zealand, who aim to improve Aboriginal, Torres Strait and Māori health through medical education, as well as Indigenous student recruitment and support.

LIME Reference Group meetings are held biannually, and are hosted by a different medical school for each meeting.



ANU
BOND
CURTIN 02

DEAKIN
FLINDERS SA
FLINDERS NT 03

GRIFFITH
JAMES COOK
MONASH 04

ADELAIDE
AUCKLAND 05

MELBOURNE
NEWCASTLE
NEW SOUTH WALES 06

NOTRE DAME
SYD & FREMANTLE
OTAGO 07

QUEENSLAND
SYDNEY
TASMANIA 08

WESTERN AUST
WESTERN SYDNEY
WOLLONGONG 09

BACKGROUND 10

DESIGN
Caitlin Ryan & Inprint Design

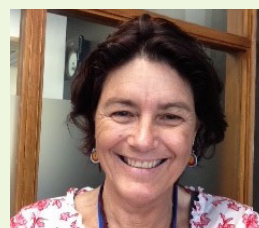
LOGO AND ARTWORK
Michelle Smith & Kevin Murray

REFERENCE GROUP MEMBERS

AUSTRALIAN NATIONAL UNIVERSITY – MS SAMIA GOUDIE

Senior Lecturer, Indigenous Health

Samia is a Bundjalung, Mununjali woman and is the Senior Lecturer, Indigenous Health at the ANU Medical. Samia has a long history of working both on the ground and within Universities in Australia and Overseas. She received a Fulbright Fellowship in 2007, which allowed her to travel across the USA sharing her research on wellness and resilience with Indigenous communities, Universities and Tribal colleges. Samia now Lectures for the ANU and enjoys supporting, with others, the growth of the Indigenous Health stream (IHS).



Proxy: Ms Gaye Doolan - Co-ordinator of Indigenous Health and Student Engagement

BOND UNIVERSITY – DR SHANNON SPRINGER

Discipline Lead for Indigenous Health, Faculty of Health Sciences and Medicine.

Shannon is an Aboriginal General Practitioner from Mackay, where he has been working at the local Aboriginal Medical Service for the past six years. He recently relocated to Gold Coast to further the Aboriginal and Torres Strait Islander Health curriculum at Bond University and develop a recruitment and retention program for Indigenous Students across Bond University's Health Sciences and Medicine Faculty. Shannon also works two days a week at Kalwun Health Service, the Aboriginal Medical Service for the Gold Coast.



Proxy: Dr Brad Murphy - Associate Professor (Discipline Lead), Faculty of Health Sciences and Medicine.

CURTIN UNIVERSITY – MS CHERYL DAVIS

Director of Indigenous Engagement, Faculty of Health Sciences

Cheryl is a Yuet/Baladong woman from Noongar country of the south-west of Western Australia. Cheryl graduated with a bachelor of Health Science and Masters in Public Health and has worked in universities for the past 15 years. Cheryl's teaching experiences include Indigenous health, health policy, Australian Indigenous history, culture, families, mental health, Aboriginal health sector and health in an Indigenous context. Cheryl is passionate about improving the health and wellbeing of Aboriginal people so we can have a quality of life equal to that of other Australians.



DEAKIN UNIVERSITY – DR SCOTT MCCOOMBE

Lecturer in Public Health, School of Medicine

Scott is Lecturer in Public Health in the School of Medicine at Deakin University. His research and teaching involve rural health, cultural awareness, communicable and non-communicable disease epidemiology and community health.



REFERENCE GROUP MEMBERS

DEAKIN UNIVERSITY – MS CANDICE MCKENZIE

Coordinator, Indigenous Medical Education



Candice is the Deakin School of Medicine Coordinator – Indigenous Medical Education. She is currently working toward a Masters Public Health through Deakin's Institute of Koorie Education, where she completed her undergraduate degree, a Bachelor Education (Primary). Candice is a proud Arende/Walpiri woman from Darwin, Northern Territory. She has worked across various Government and NGOs where she worked in the health sector. Positions included; Volatile Substance Abuse Support worker, Coordinator - therapeutic placements for volatile young people, Mentor/ leadership roles in schools across the Northern Territory and teaching positions in remote Northern Territory communities and now with Institute of Koorie Education.

Candice has immersed herself in the Wathaurong community since moving to Geelong in 2013. She has assisted in planning NAIDOC events, Close the Gap, Indigenous holiday camps in collaboration with the Geelong Football Club, and Cultural Immersion Programs in partnership with Deakin's School of Medicine. Candice's experience in working with Aboriginal Organisations remote communities and the wider Deakin Community places her in a unique position to support the Medical School.

FLINDERS UNIVERSITY, NT – CRAIG ALLEN

Deputy Director



Craig is a Yandruwandha Yawarawarka man. With a background in Psychology Craig has worked extensively throughout the country supporting Aboriginal and Torres Strait Islander individuals, their families and communities.

Craig works within the philosophy of "Cultural Way First" and this philosophy has influenced his direct clinical practice and is reflected throughout his work at a local and national level. Craig has been teaching future generations of Health practitioners the importance of Aboriginal and Torres Strait Islander culture and how to better provide culturally safe / secure Health services.

FLINDERS UNIVERSITY, SA – PROFESSOR DENNIS MCDERMOTT

Associate Professor in Indigenous Health



Dennis is the Associate Head of Faculty, Aboriginal and Torres Strait Islander Health, within the Faculty of Health Sciences at Flinders University. He is also the Director of the Poche Centre for Indigenous Health and Well-Being, Adelaide. A Koori man, his mother's family are from Gadigal land (inner Sydney) with connections to Gamilaroi country (north-west NSW).

Dennis is a psychologist, academic and poet. He has worked in such diverse fields as alcohol and other drug education and counselling, private therapeutic practice, community health and men's health research. He has trained Aboriginal foster carers, supervised counsellors to the 'stolen generations' and worked with families dealing with a death in custody. Dennis's teaching and research interests encompass early childhood, social determinants of Indigenous health, racism, incarceration, Indigenous social, spiritual and emotional well-being, workforce development, Indigenous health pedagogy, and the nexus of culture and context in service delivery.

REFERENCE GROUP MEMBERS

GRIFFITH UNIVERSITY – MS RONELL WILSON

Lecturer, First Peoples Health Unit

Ronell Wilson is an Aboriginal woman with ancestral connections to the Bidjara peoples from Central Western Queensland. Ronell has over 20 years of experience in Indigenous Health where she started her journey as a health worker and then became the Indigenous Child Health Coordinator within the Children's Health Service, Brisbane. Ronell has extensive experience and involved with the cultural practice program design and delivery within Queensland Health for many years.



Ronell is currently the Lecturer for First Peoples Health at Griffith University and a Director for the National Indigenous Corporation for FAS (Fetal Alcohol Syndrome) Education Network (NICFASSEN). Ronell's expertise is in Indigenous Health education and training, to provide pathways for Indigenous Health Workers to work within child health. Ronell has worked within Aboriginal communities throughout Queensland and is passionate about educating students on Indigenous Health and to raise awareness of the impacts of alcohol and Fetal Alcohol Syndrome Disorders (FASD) in Aboriginal communities.

JAMES COOK UNIVERSITY – MR DONALD WHALEBOAT

Senior Lecturer, School of Medicine and Dentistry

Donald has dedicated nearly 20 years to improving the health of Aboriginal and Torres Strait Islanders, working in community health, research, strategic workforce planning, training and development, primary healthcare and health promotion. Currently Donald plays a role in the planning, development and delivery of Indigenous health subjects as part of the MBBS program.



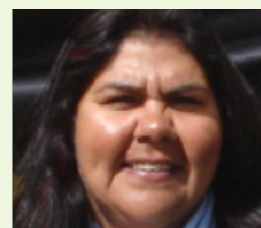
His work to establish a framework for community engagement and partnership between James Cook University and the Indigenous community means health subjects are influenced by the needs of that community. Donald also liaises with health services in the region to promote and support the placement of students into the medical workforce.

Donald is currently the Chair, Townsville Aboriginal and Torres Strait Islander Corporation for Health Services and in the past was a committee member for National Health and Medical Research Council Aboriginal and Torres Strait Islander Nutrition Working Party (1996) and the Project Management Committee for Aboriginal and Torres Strait Islander Health Worker Competency Standards (1994).

MONASH UNIVERSITY – MS ROSEMARY GILBY

Lecturer, Gukwonderuk Indigenous Engagement Unit

Rose is a health professional with 20 years of experience in direct clinical care. She has 10 years' experience teaching Indigenous and rural health perspectives to undergraduate, graduate health students and health professionals. Rose has proven ability to drive effective community, industry and educational program response rates through engagement and execute successful engagement to achieve program deliverables. Delivering cultural awareness/safety programs to undergraduate, graduate health professional students and health workforce. She is an outcomes thinker with diverse networks built on strong positive relationship



REFERENCE GROUP MEMBERS

UNIVERSITY OF ADELAIDE – DR DYLAN COLEMAN

Lecturer, Yaitya Purruna, the Indigenous Health Unit

Dylan is a Kokatha (Gugada) Aboriginal/Greek woman from the far west coast of South Australia. She is a Lecturer in Yaitya Purruna, the Indigenous Health Unit at the University of Adelaide and teaches Indigenous Health to medical, dentistry and health science students. In 2011, Dylan completed her doctorate at the University of Adelaide's English Department. It explores Indigenous narrative process and its capacity to recreate stories of trauma and loss into ones of survival and liberation.



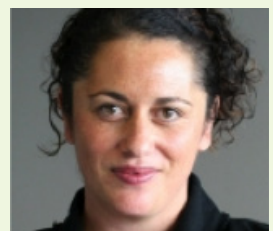
In 2011, the creative component of Dylan's PhD, *Mazin Grace* (based on her mother's childhood growing up on Koonibba Mission), won the Arts Queensland David Unaipon Award as part of the Queensland Premiers Literary Awards and was subsequently published in 2012 (her Master's manuscript was also shortlisted for the same award). Dylan's experience is in community engagement within various Indigenous communities throughout Australia, and in South Australia in the area of public health, with a focus on substance misuse and building community capacity and resilience through community controlled approaches to health.

Research Interests: Indigenous community engagement; Social determinants of Indigenous health; Equitable and accountable frameworks in health policy development and delivery; Indigenous pathways to university Health Science degrees; Creative approaches to teaching and learning in the Health Sciences; Embedding Indigenous Knowledges into Health Sciences curriculum; Intersections between creative media and psychological trauma recovery; and Participatory Action Research methodologies.

UNIVERSITY OF AUCKLAND – DR ELANA CURTIS

Senior Lecturer Medical, Director Vision 20:20, Te Kupenga Hauora Māori, Faculty Medical and Health Sciences

Elana (Ngāti Rongomai, Ngāti Pūkiao, Te Arawa) is a Public Health Physician currently working as Senior Lecturer Medical at Te Kupenga Hauora Māori, University of Auckland. She is Director Vision 20:20 at Te Kupenga Hauora Māori – Department of Māori Health that has leadership responsibility for the Whakapiki Ake Project (Māori recruitment), the CertHSc (a pre-degree programme aimed at increasing the number of Māori and Pacific students entering into Medicine, Pharmacy, Nursing and Health Sciences), and MAPAS (Māori and Pacific Admission Scheme).



In 2004-2005, Elana was a Harkness Fellow in Healthcare Policy based at the University of California (San Francisco) - investigating ethnic disparities in breast cancer mortality and survival. Prior to this, Elana worked at the National Screening Unit, Ministry of Health in Wellington where she investigated Māori/non-Māori disparities in breast cancer epidemiology, and at Te Ropu Rangahau Hauora a Eru Pōmare – Māori Health Research Centre at the University of Otago investigating ethnic disparities in access to invasive cardiovascular procedures/caesarean sections and the relationship between disparities and deprivation.

Her research interests include investigating ethnic inequalities in health using a Kaupapa Māori Research framework in order to eliminate existing disparities.

She has more recently focused on education and health workforce research exploring what helps and hinders Māori student success within tertiary health professional study. She is proud Mum to two beautiful kōtiro - Taipapaki (5 years) and Iritekura (2.5 years).

REFERENCE GROUP MEMBERS

UNIVERSITY OF MELBOURNE – TBC

UNIVERSITY OF NEWCASTLE – ASSOCIATE PROFESSOR PETER O'MARA

Associate Professor, Indigenous Medical Education, Head of Discipline, Indigenous Health

Peter is from the Wiradjuri people of NSW. Peter has worked with the Tobwabba Aboriginal Medical Service since 2002, and describes himself as an Aboriginal man who loves being a doctor.

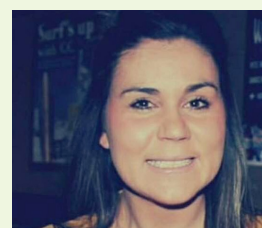


Peter loves working one on one with his patients and finds a source of satisfaction in the knowledge that, in his own small way, the work that he does contributes toward closing the gap between Indigenous and non-Indigenous health outcomes. In 2008, Peter pursued his other passion – making good doctors – and took on the position of Associate Professor, Indigenous Medical Education and Head of Discipline, Indigenous Health at Newcastle University. Peter has been a member of the AIDA Board for 8 years and President from 2009-2012.

Proxy: Ms Vicki Holliday - Conjoint Fellow & Lecturer, University of Newcastle.

UNIVERSITY OF NEW SOUTH WALES – DR KHYARNE BILES, Conjoint Lecturer, UNSW Medicine

Khyarne is from Dubbo, NSW and has only lived away from there whilst completing her Bachelor of Medicine Studies/Doctor of Medicine from 2009-2014. She is a Ngemba woman, her family from Brewarrina, north western NSW.



Khyarne came through the Pre-Medicine Program, which is the Indigenous Entry pathway into Medicine at UNSW. Once she was accepted into the program, she was the successful recipient of the Balnaves Foundation Scholarship and the Shalom Gamarada Residential Scholarship from 2009-2014. She was also successful in obtaining a NSW Rural Resident Medical Officer Cadetship. It was always Khyarne's plan to return to Dubbo to practice, which she did in 2015 to commence her internship. She is currently a resident and in 2017, she will start her Emergency training at the Dubbo Base Hospital.

She is involved in teaching during the Pre-Medicine Program and is a mentor to the current UNSW Indigenous students.

REFERENCE GROUP MEMBERS

UNIVERSITY OF NOTRE DAME, FREMANTLE – PROFESSOR DAVID PAUL

Associate Dean Aboriginal Health

David is the Associate Dean Aboriginal Health in the School of Medicine (Fremantle) at University of Notre Dame, Fremantle. He formerly held the position of Deputy Director of the Centre for Aboriginal Medical and Dental Health at the University of Western Australia.



David's research interests and experience includes Indigenous recruitment and retention, cultural and organisational change, the development and implementation of Indigenous health curriculum, the preparedness of practitioners to work with Indigenous peoples and self determination and community control in Aboriginal health. David's work in Indigenous health and education has been recognised through several Honours and Awards including multiple LIMELight awards including the 2011 Leadership Award (2011) for Outstanding Leadership by an Individual. David first became involved in Aboriginal health in the 1970s as a medical student and continues to work towards improved health outcomes and quality health care for Indigenous peoples.

Key research: Aboriginal Health; Community Based Community Controlled Health Care; Structural Issues influencing health status; Alternatives to Fee for Service Health Care; Advocacy for Health to be seen as a Community rather than Individual Issue; Consumer Rights; and Occupational Health, Safety and Welfare.

UNIVERSITY OF NOTRE DAME, SYDNEY – MS MIRIAM CAVANAGH

Associate Lecturer, Aboriginal and Torres Strait Islander Development, School of Medicine

Miriam is a Lecturer and also a Cultural Mentor in Aboriginal and Torres Strait Islander Health to Medical and Nursing Students. Miriam's dad is a Wonnarua Aboriginal man from the New South Wales area and her mother is of both Aboriginal and Torres Strait Islander families from Lockhart River and Yarrabah areas, and from the Western Islands in the Torres Straits called YAM Island (IAMA or in Kulkalgau, Ya).



UNIVERSITY OF OTAGO – ASSOCIATE PROFESSOR SUZANNE PITAMA

Senior Lecturer & Associate Dean, MIHI (Māori/Indigenous Health Institute)

Suzanne, Ngati Kahungunu, Senior Lecturer and Director of the Māori/Indigenous Health Institute, University of Otago, Christchurch. Suzanne is a child psychologist and has been involved in Māori health research for over 18 years. She is a keen advocate for Kaupapa Māori based methodologies and has interests in child mental health, medical curriculum development and Māori health community based projects. Suzanne is currently leading an HRC funded project that focuses on prevalence of cardiovascular disease in Māori communities & is a co-investigator on an international collaboration project (New Zealand, Australia & Canada) looking at the role of medical education in addressing health disparities (Educating for Equity). Suzanne has also recently submitted her PhD (Otago) which examined the design, implementation and impact of indigenous health curricula within medical schools.



REFERENCE GROUP MEMBERS

UNIVERSITY OF QUEENSLAND – DR MAREE TOOMBS

Director, Indigenous Health, School of Medicine

Maree is the Indigenous Health Coordinator at the School of Medicine. Her role includes curriculum development and research. Dr Toombs has over 13 years' experience teaching and developing curriculum with an Indigenous perspective both in education and health. Dr Toombs has been awarded a 2011 Churchill Fellowship and has research interests in the area of social and emotional wellbeing of Aboriginal and Torres Strait Islander peoples.



Dr Toombs was elected to the Medical Deans Australia and New Zealand's, Indigenous Health Expert Advisory Group for 2012 and was awarded a 2013 NHMRC Early Career Fellowship to investigate Co-existent Mental Illness & Chronic Physical Illness in Aboriginal & Torres Strait Islander peoples: Can an Action Research intervention within an Aboriginal Medical Service reduce morbidity?

UNIVERSITY OF SYDNEY – ASSOCIATE PROFESSOR LILON BANDLER

Associate Professor, Indigenous Health Education Unit, Sydney Medical School

As an Associate Professor in the Indigenous Health Education Unit, Sydney Medical School (University of Sydney), Lilon is responsible for the development, integration and implementation of comprehensive Indigenous health learning and teaching resources for the Sydney Medical Program, as well as providing personal and academic support of Indigenous medical students, and increasing the recruitment of Aboriginal and Torres Strait Islander students to medicine.



She has broad teaching experience, across the spectrum of undergraduate and postgraduate medical education, and has a special interest in teaching communication skills.

Dr Bandler has worked in general practice for over 15 years, and continues to work part-time for the Royal Flying Doctor Rural Women's GP Service.

UNIVERSITY OF TASMANIA – DR MAUREEN DAVEY

Senior Lecturer in Medical Practice

Maureen is a non-Aboriginal woman from Tasmania who has worked as a general practitioner and public health physician with the Tasmanian Aboriginal Centre (TAC) since 1991.



As well as her ongoing role as public health medical advisor with the TAC, Maureen now works part-time teaching public and population health in the undergraduate medical school at the University of Tasmania.

Part of this role involves developing and teaching the curriculum and teaching of Aboriginal health, and supporting the recruitment and retention of Aboriginal students. Maureen's research involves working with the Tasmanian Aboriginal Centre to evaluate the role of health services in improving Aboriginal health.

REFERENCE GROUP MEMBERS

UNIVERSITY OF WESTERN AUSTRALIA – ASSISTANT PROFESSOR PAULA EDGILL

Assistant Professor, Centre for Aboriginal Medical and Dental Health

Paula is a Noongar woman. As a medical Doctor Paula works with cultural safe/ secure clinical practices while delivering clinical services directly to community at a local Aboriginal community controlled medical service. This is holistic clinical practice, based on her on her own clinical experiences and practice, Paula is also an Assistant Professor with the CAMDH at UWA. Paula advocates passionately about the need for holistic health services and how students wanting to work within a health care setting can achieve long term individual and systematic changes in order to produce better health outcomes.



UNIVERSITY OF WESTERN SYDNEY – MS CHRISTINE CARRIAGE

Indigenous Program Officer

Christine's position has a strategic focus while retaining a hands on approach. It encompasses retention and recruitment of Indigenous students, engaging with Aboriginal communities, contributing to the development of the Aboriginal Health Curriculum and delivering lectures and workshops for students, staff and community partners. She provides cultural advice and support to students, staff, projects and research projects. As a senior Indigenous employee of UWS, Cris contributes to university-wide Indigenous projects and activities.

Throughout Christine's career she has worked for government departments such Health, Land Council & Aboriginal Housing Office as well as Tharawal Aboriginal Corporation in many positions. Christine holds a Bachelor in Community Development, Diploma in Community Development, Masters in Indigenous Health Studies, & is undertaking a PhD with the school of Medicine.



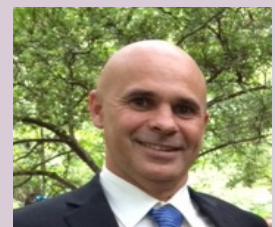
UNIVERSITY OF WOLLONGONG – DR SCOTT WINCH

Academic Leader, Indigenous Health

Scott, a Wiradjuri man, is the Academic Leader of Indigenous Health for the Graduate School of Medicine at the University of Wollongong. Scott is responsible for the recruitment and retention of Aboriginal medical students, the development and delivery of the Indigenous health curriculum, community engagement and research.

Scott started working in health as an Aboriginal Health Worker in 2001 for the Illawarra Shoalhaven Local Health District before moving on to manage the Aboriginal Health Unit for Sydney South West Local Health District for a number of years. He has also held the position of Manager of Public Health for the AH&MRC of NSW and more recently worked for the NSW Ministry of Health in Public Health.

Scott is in the final stages of writing up his PhD with the University of Melbourne on "the impact of school engagement on educational outcomes for Victorian Aboriginal primary school children" and is planning to submit by the end of the year. He has a Graduate Diploma in Health Service Management with the University of New England through the NSW Aboriginal Health Management Training Program as well as a Masters of Applied Epidemiology with the Australian National University.



BACKGROUND

The Leaders in Indigenous Medical Education (LIME) Network Program is a dynamic network dedicated to ensuring the quality and effectiveness of teaching and learning of Indigenous health in medical education, as well as best practice in the recruitment and graduation of Indigenous medical students.

We do this through a bi-national presence that encourages and supports collaboration within and between medical schools in Australia and Aotearoa/New Zealand, and by building linkages with the community and other health science sectors.

The LIME Network is a program of Medical Deans Australia and New Zealand and receives funding from the Australian Government Department of Health.*

It was developed as a stand alone project in 2008 and stemmed from the Indigenous Health Project (2002-2008). Major outcomes of this Project included the Indigenous Health Curriculum Framework and the Critical Reflection Tool, which remain important resources.

The LIME Network Program's significant outcomes include:

- Facilitation of bi-annual **Reference Group** meetings to provide opportunities for those working in Indigenous health & medical schools to collaborate, share information, provide feedback & network;
- The biennial **LIME Connection** conference, providing a forum for knowledge transfer & dissemination, also including the **LIMELight Awards** to celebrate successes;
- The **Indigenous Student and Community Bursary Scheme**, providing the opportunity for student networking & peer support at LIME Connection;
- Publication of the tri-annual **LIME Network Newsletter** promoting best practice & sharing successes in the field;
- Maintaining the **LIME Network Website**, housing information on LIME Network projects, news & events;
- Building the evidence base of Indigenous health curriculum & student recruitment & support, through publishing **Good Practice Case Studies Booklets** & a Special Edition of the **ANZAHPE Focus on Health Professional Education Journal**;
- Developing & implementing **internal review tools**, supporting medical schools to reflect & evaluate performance;
- Supporting Indigenous people to explore pathways to studying medicine, through the **Indigenous Pathways into Medicine Online Resource & Video Profiles**;
- Strengthening capacity & sharing knowledge among network membership through **Slice of LIME Seminars**;
- Developing a **Peer Support Statement and Strategy** that operates across universities;
- Building linkages across health disciplines & with medical colleges through **networking and information sharing**;
- Supporting collaboration between medical schools & Indigenous Community Controlled Health Organisations through **Regional Meeting facilitation**;
- Hosting meetings with **medical school Deans**, to introduce the LIME Network & update existing medical & health science staff on program activities.

CONTACT DETAILS

If you would like more information regarding LIME Network activities, would like to become a member, or have something you would like to contribute to our next Newsletter, please contact us.

T: +61 3 8344 9160

E: lime-network@unimelb.edu.au

Website: limenetwork.net.au

Facebook: facebook.com/LIMENetwork

Twitter: twitter.com/LIME_Network

YouTube: youtube.com/LIMENetworkProgram