

## DAY 1 TUESDAY 29 NOVEMBER – WAIPAPA MARAE

TIME	ACTIVITY
7:30 – 8:30 am	<b>Registrations at Rydges Auckland</b> Lobby, Level 1
8:30 am	<b>Buses leave from Rydges</b> Lobby, Ground Floor
9:00 am	<b>Buses arrive at Waipapa Marae</b>
9:00 – 11:00 am	<b>Official Welcome</b> <i>Chair: Papaarangi Reid</i> <i>See Conference Program page 25</i> <ul style="list-style-type: none"><li>• The University of Auckland, Te Ohu Rata o Aotearoa (Te ORA) The Māori Medical Practitioners Association of Aotearoa</li><li>• University of Otago, Australian Indigenous Doctors' Association</li></ul> <b>Medical Deans Australia and New Zealand/ Te ORA signing of the Collaboration Agreement</b>
11:00 – 11:30 am	<b>Morning Tea</b>

*DAY 1 continues overleaf*





## DAY 1 CONTINUED

	MARAE PLENARY ROOM	OWEN GLENN BUILDING, LECTURE THEATRE OGGB3, THE UNIVERSITY OF AUCKLAND CITY CAMPUS
11:30 am – 1:00 pm	<p><b>Self-Determination in Medical Education</b> Sponsored by The Lowitja Institute (Indigenous Delegate Session)</p> <p><i>Chairs: Papaarangi Reid, Suzanne Pitama</i> <i>See Conference Program page 30</i></p> <p><i>Te reo Māori and Tikanga in Medical Education</i></p> <ul style="list-style-type: none"> <li>• Bridget Robson</li> <li>• Shirley Simmonds University of Otago, Wellington</li> </ul> <p><i>Clinical Placements in Aboriginal Organisations: The Opportunities, Expectations and Challenges</i></p> <ul style="list-style-type: none"> <li>• Shawana Andrews The University of Melbourne</li> </ul> <p><i>Tātou Tātou – Success for All. Improving Māori Student Success in Health Professional Degree-Level Programmes</i></p> <ul style="list-style-type: none"> <li>• Elana Curtis</li> <li>• Erena Wikaire The University of Auckland</li> </ul>	<p><b>Walking Alongside: Non-Indigenous Engagement in a Self-Determined Environment</b> (Non-Indigenous Delegate Session)</p> <p><i>Chairs: David Paul, Jane MacLeod</i> <i>See Conference Program page 34</i></p> <p><i>Achieving and Maintaining a Comprehensive Approach: What is Involved, Why and Next Steps</i></p> <ul style="list-style-type: none"> <li>• David Paul The University of Western Australia</li> </ul> <p><i>Keeping Indigenous Health on the Radar: Minimising the Impact of Innocent Change</i></p> <ul style="list-style-type: none"> <li>• Lutz Beckert University of Otago</li> </ul> <p><i>Challenging Circumstances? The Realities of a Small School with Fractional Staff</i></p> <ul style="list-style-type: none"> <li>• Jane MacLeod Griffith University</li> </ul> <p><i>Followed by Group Discussion</i></p> <ul style="list-style-type: none"> <li>• Clinton Schultz (facilitator) Griffith University</li> </ul>
1:00 – 1:45 pm	Lunch	

*DAY 1 continues next page*

## DAY 1 CONTINUED

	MARAE PLENARY ROOM
1:45 – 3:15 pm	<b>Plenary Session – All Delegates</b> <b>Moana Jackson</b> <i>Chair: Rhys Jones</i> <i>See Conference Program page 36</i>
3:15 – 3:30 pm	Afternoon Tea
	MARAE PLENARY ROOM
3:30 – 4:00 pm	<b>Plenary Session – All Delegates</b> <b>Ngangkari Traditional Healers</b> <i>Chair: Romlie Mokak</i> <i>See Conference Program page 36</i>
4:00 – 4:15 pm	<b>Closing Comments</b> <i>Chair: Papaarangi Reid</i>
4:20 pm	Buses leave from Waipapa Marae
4:30 pm	Buses arrive at Rydges
	Free Evening

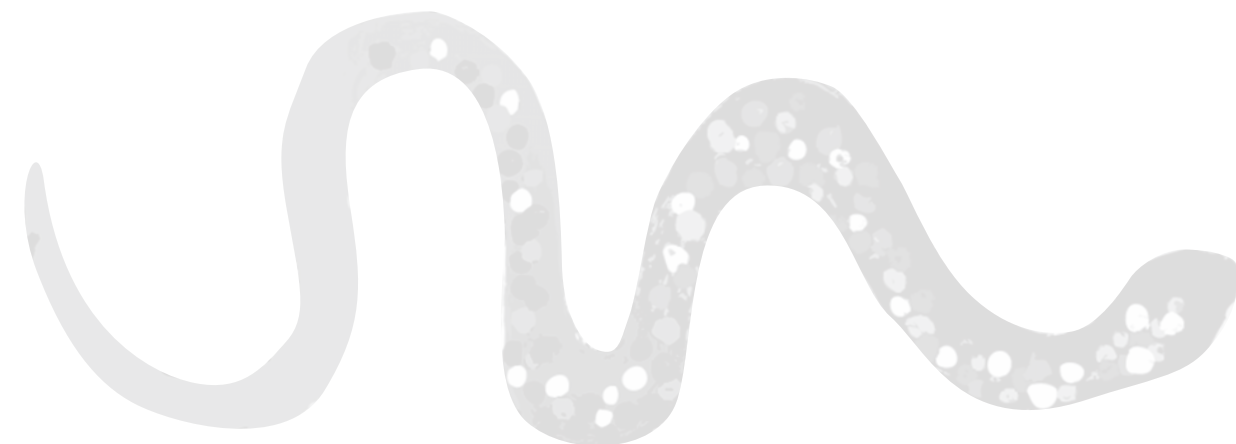




## DAY 2 WEDNESDAY 30 NOVEMBER – RYDGES AUCKLAND

TIME	ACTIVITY
8:00 am – 4:00 pm	<b>Registrations at Rydges Auckland</b> Lobby, Level 1
	<b>HOBSON (PLENARY) ROOM</b>
9:00 – 10:00 am	<b>Welcome</b> <b>Keynote Address: Linda Smith</b> The University of Waikato  <i>Creating Better Outcomes through More Informed Practices – The Role of Indigenous Knowledge Within Curriculum</i> <i>Chair: Sue Crengle</i> <i>See Conference Program page 27</i>
10:00 – 10:30 am	<b>Morning Tea</b> Lobby, Level 1, Rydges Auckland  <b>Posters and Networking</b> <i>See Conference Program page 88</i>

*DAY 2 continues next page*



## DAY 2 CONTINUED

	BREAKOUT ROOM 1 (KINGSTON RM 1–2)	BREAKOUT ROOM 2 (KINGSTON RM 3–4)	BREAKOUT ROOM 3 (HOBSON RM 2–3)
10:30 am –12:00 pm	<p><b>Recruitment: Secondary Schools</b>  <i>Chair: Alison Jones</i>  <i>See Conference Program page 37</i></p> <p><i>Creating Change: Improving Access to Health Careers via High School Engagement Camps</i></p> <ul style="list-style-type: none"> <li>Christine Clinch</li> <li>David Paul The University of Western Australia</li> </ul> <p><i>Engaging with the Community to Widen the Participation of Indigenous Students in Dentistry and Medicine</i></p> <ul style="list-style-type: none"> <li>Louise Alldridge Griffith University</li> </ul> <p><i>Hands on Health at Monash University: A Taste of Tertiary Education Opportunities in Health Care for Indigenous Secondary School Students</i></p> <ul style="list-style-type: none"> <li>Kristel Keleher Monash University</li> </ul>	<p><b>Teaching and Learning: Practice Models</b>  <i>Chair: Marlene Kong</i>  <i>See Conference Program page 41</i></p> <p><i>The Impact of Using Aboriginal and Torres Strait Islander Simulated Patients for Cultural Competency Education for 1st Year Medical Students</i></p> <ul style="list-style-type: none"> <li>Clinton Schultz Griffith University, Marumali Consultations</li> <li>Jane MacLeod Griffith University, Inala Indigenous Health, Inala Primary Care</li> </ul> <p><i>Hearts and Minds: Reflections from a 5th Year Medical Student Māori Health Immersion</i></p> <ul style="list-style-type: none"> <li>Joanne Baxter</li> <li>Francis Kewene University of Otago, Dunedin</li> </ul> <p><i>Exploring Native Hawaiian Health Past to Future: Weaving Together Cultural Immersion and Research Methodology</i></p> <ul style="list-style-type: none"> <li>Martina Kamaka University of Hawai'i</li> </ul> <p><i>Hui Process – Evaluation of a Method of Indigenous Cultural Competency at a Student Led Indigenous Health Clinic</i></p> <ul style="list-style-type: none"> <li>Cameron Lacey University of Otago, Christchurch</li> </ul>	<p><b>Systems and Inter-Professional Education</b>  <b>Sponsored by Health Workforce Australia</b>  <i>Chair: Louise Lawler</i>  <i>See Conference Program page 46</i></p> <p><i>Community Partnerships and Organisational Reform in a Medical Faculty</i></p> <ul style="list-style-type: none"> <li>Gregory Phillips</li> <li>Marlene Drysdale Monash University</li> <li>Jill Gallagher Victorian Aboriginal Community Controlled Health Organisation</li> </ul> <p><i>Faculty of Dentistry Engagement with Māori Oral Health Providers</i></p> <ul style="list-style-type: none"> <li>John Broughton University of Otago, Dunedin</li> </ul> <p><i>What Socially Accountable Medical Education Means for Indigenous Students and Communities</i></p> <ul style="list-style-type: none"> <li>Simone Ross</li> <li>Tristan Cox James Cook University, Townsville</li> </ul>

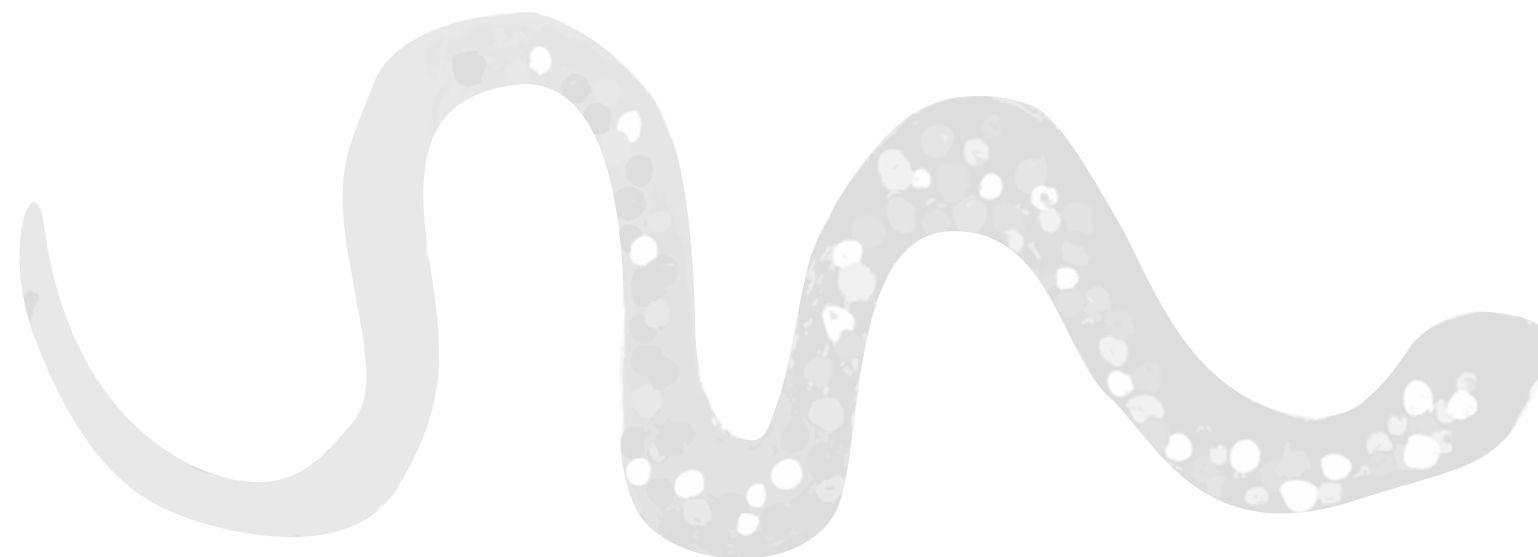
DAY 2 continues overleaf



## DAY 2 CONTINUED

12:00 – 1:00 pm	<b>Lunch – STK Restaurant</b> Ground Floor, Rydges Auckland <b>Posters and Networking</b>
	<b>HOBSON (PLENARY) ROOM</b>
1:00 – 1:45 pm	<b>Keynote Address: Dee-Ann Carpenter</b> University of Hawai'i  <i>So You Think You Know Your Patient? Talking Story and Kuleana</i> <i>Chair: Tania Huria</i> <i>See Conference Program page 28</i>

*DAY 2 continues next page*



## DAY 2 CONTINUED

	BREAKOUT ROOM 1 (KINGSTON RM 1–2)	BREAKOUT ROOM 2 (KINGSTON RM 3–4)	BREAKOUT ROOM 3 (HOBSON RM 2–3)
2:00 – 3:30 pm	<p><b>Recruitment: Foundation Programs</b>  <i>Chair: Shaun Ewen</i>  <i>See Conference Program page 50</i></p> <p><i>Increasing the Scaffolding: Development and Implementation of an Innovative Chemistry Preparatory Program for Indigenous Students Entering the MBBS Program</i></p> <ul style="list-style-type: none"> <li>• Emma Bartle</li> <li>• Maree Toombs The University of Queensland</li> </ul> <p><i>Tū Kahika: Māori Student Achievement in Health Sciences</i></p> <ul style="list-style-type: none"> <li>• Zoe Bristowe</li> <li>• Joanne Baxter University of Otago, Dunedin</li> </ul> <p><i>Ten Years of Recruiting and Supporting Aboriginal Students in the Faculty of Medicine</i></p> <ul style="list-style-type: none"> <li>• Leah Walker The University of British Columbia</li> </ul> <p><i>Lessons Learnt from a Premed Summer Institute for Post-Secondary Indigenous Students</i></p> <ul style="list-style-type: none"> <li>• Michael Jong Memorial University</li> </ul>	<p><b>Teaching and Learning: Pedagogies</b>  <i>Chair: Lisa Jackson Pulver</i>  <i>See Conference Program page 54</i></p> <p><i>Dilemmas with Dichotomies: Getting a Balance when Teaching Indigenous Health to a Primarily Non-Indigenous Health Workforce</i></p> <ul style="list-style-type: none"> <li>• Pauline Guerin Flinders University, South Australia</li> </ul> <p><i>Same Words Different Stories – Transferring an Aboriginal Health Curriculum Across Disciplines</i></p> <ul style="list-style-type: none"> <li>• Craig Allen</li> <li>• David Paul</li> <li>• Paula Edgill The University of Western Australia</li> </ul> <p><i>Building the Evidence Base: Using Culturally Appropriate Learning Contracts for Students Undertaking Clinical Placements in Aboriginal Communities</i></p> <ul style="list-style-type: none"> <li>• Jane Havelka</li> <li>• Wilma Pfitzner</li> <li>• Faye McMillan Charles Sturt University</li> </ul> <p><i>Embedding Indigenous Knowledge into the Medical Curriculum Through Filmic Media for Unique Outcomes</i></p> <ul style="list-style-type: none"> <li>• Dylan Coleman The University of Adelaide</li> </ul>	<p><b>Racism</b>  <i>Chair: Lilon Bandler</i>  <i>See Conference Program page 58</i></p> <p><i>Developing Moral Courage</i></p> <ul style="list-style-type: none"> <li>• Maggie Grant James Cook University, Townsville</li> </ul> <p><i>The Impacts of Racism on Health, Training and Careers of Indigenous Medical Students and Physicians</i></p> <ul style="list-style-type: none"> <li>• Donna Cormack University of Otago, Wellington</li> </ul> <p><i>Managing a Diverse Student Discomfort with Indigenous Health Curriculum</i></p> <ul style="list-style-type: none"> <li>• Dennis McDermott</li> <li>• Dave Sjoberg Flinders University, South Australia</li> </ul>

DAY 2 continues overleaf



## DAY 2 CONTINUED

3:30 – 4:00 pm	<p><b>Afternoon Tea</b> Lobby, Level 1, Rydges Auckland</p> <p><b>Posters and Networking</b></p>
	<b>HOBSON (PLENARY) ROOM</b>
4:00 – 4:45 pm	<p><b>Plenary Panel</b> <b>Indigenous Medical Education: Responsibility, Reform and Strategies for Success</b> <i>Chair: Papaarangi Reid</i> <i>See Conference Program page 61</i></p> <ul style="list-style-type: none"><li>• Alison Jones – Medical Deans Australia and New Zealand</li><li>• Peter Crampton – University of Otago</li><li>• Pat Maher – Health Workforce Australia</li></ul>
6:45 pm –Midnight	<p><b>LIME Connection IV Dinner</b> Floating Pavilion, Auckland Waterfront</p> <p><i>Master of Ceremonies: David Jansen</i> <i>See Conference Program page 20</i></p> <ul style="list-style-type: none"><li>• Major Change Jazz Ensemble (Auckland University)</li><li>• LIMELight Awards Presentation</li><li>• DJ Raj</li></ul>

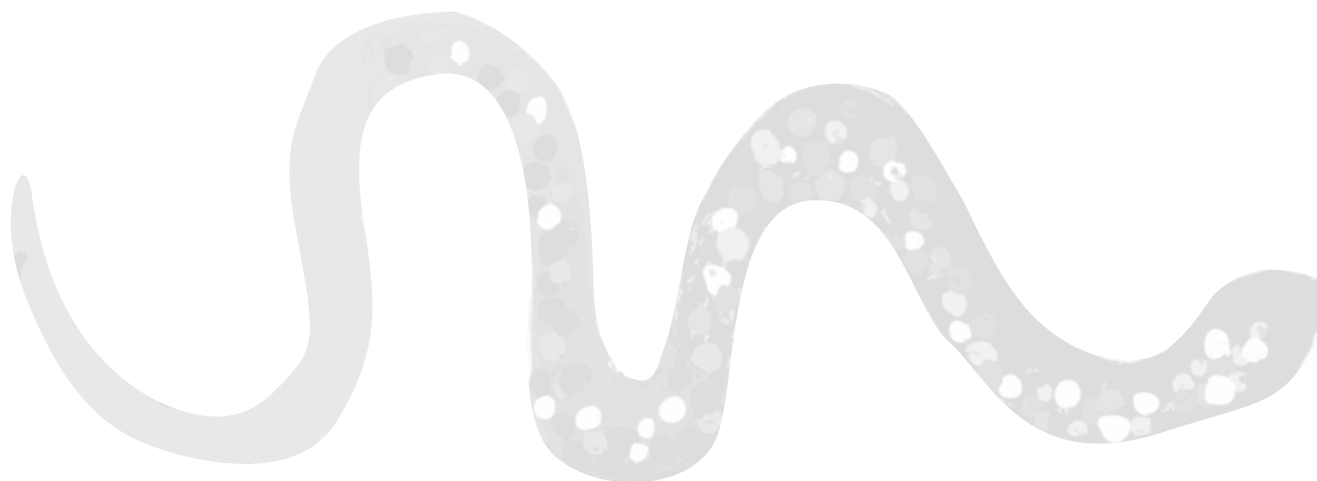




## DAY 3 THURSDAY 1 DECEMBER – RYDGES AUCKLAND

TIME	ACTIVITY
8:30 – 9:00 am	<b>Registrations at Rydges Auckland</b> Lobby, Level 1
	<b>HOBSON (PLENARY) ROOM</b>
9:00 – 9:45 am	<b>Keynote Address: Shaun Ewen</b> The University of Melbourne  <i>Flexner, Foucault and the whānau</i> <i>Chair: Papaarangi Reid</i> <i>See Conference Program page 29</i>
9:45 – 10:15 am	<b>Morning Tea</b> Lobby, Level 1, Rydges Auckland  <b>Posters and Networking</b>

*DAY 3 continues overleaf*





## DAY 3 CONTINUED

	BREAKOUT ROOM 1 (KINGSTON RM 1-2)	BREAKOUT ROOM 2 (KINGSTON RM 3-4)	BREAKOUT ROOM 3 (HOBSON RM 2-3)
10:15 am – 12:15 pm	<p><b>Retention</b> <i>Chair: Dennis McDermott</i> <i>See Conference Program page 63</i></p> <p><i>Medical Deans – AIDA National Medical Education Review: A Review of the Implementation of the Indigenous Health Curriculum Framework and the Healthy Futures Report within Australian Medical Schools</i></p> <ul style="list-style-type: none"> <li>Joseph Cavanagh Medical Deans Australia and New Zealand Inc</li> </ul> <p><i>Successful Recruitment and Retention of Aboriginal Peoples into the U of S, College of Medicine – Circles of Support</i></p> <ul style="list-style-type: none"> <li>Valerie Arnault-Pelletier</li> <li>Serene Smyth</li> <li>Veronica McKinney University of Saskatchewan</li> </ul> <p><i>Win:Win. Developing Health Student Placements in Partnerships with Urban Indigenous Community-Controlled Health Services</i></p> <ul style="list-style-type: none"> <li>Alison Nelson The University of Queensland</li> </ul> <p><i>Vision 20:20. Successes to Date and Challenges Ahead</i></p> <ul style="list-style-type: none"> <li>Papaarangi Reid</li> <li>Elana Curtis The University of Auckland</li> </ul>	<p><b>Teaching and Learning: Online Tools</b> <i>Chair: Marlene Drysdale</i> <i>See Conference Program page 67</i></p> <p><i>The Indigenous Health and Cultural Competency Online Portal Project</i></p> <ul style="list-style-type: none"> <li>Kelvin Kong The Royal Australasian College of Surgeons</li> </ul> <p><i>Developing Cultural Awareness in Australian General Practice: An Online Approach</i></p> <ul style="list-style-type: none"> <li>Jill Dixon Royal Australian College of General Practitioners</li> <li>Janelle Speed University of New England</li> </ul> <p><i>ReALTiME: Teaching Indigenous Community Health in Clinical Internships</i></p> <ul style="list-style-type: none"> <li>Evelyne De Leeuw</li> <li>Gerard Finnigan Deakin University</li> <li>Auntie Lyn McInnes Wathaurong Aboriginal Health Service</li> </ul> <p><i>Elders are the Educators: Transmitting Elders' Knowledge in the 21st Century Using Lectures and Podcasts in Learning Environments as Sites for Increased Cultural Competency and Safety for Medical Students</i></p> <ul style="list-style-type: none"> <li>Daniele Soucy McMaster University</li> </ul> <p><i>Creating Cultural Empathy and Challenging Attitudes Through Indigenous Narratives</i></p> <ul style="list-style-type: none"> <li>Toni Wain Edith Cowan University</li> </ul>	<p><b>Partnerships and Community</b> <i>Chair: Maree Toombs</i> <i>See Conference Program page 73</i></p> <p><i>A Case Study of a Successful Collaboration Between the JCU Medical School and the Mount Isa Indigenous Community</i></p> <ul style="list-style-type: none"> <li>Donald Whaleboat</li> <li>Simone Ross James Cook University, Townsville</li> </ul> <p><i>What are the Experiences of Indigenous Health Workers when Teaching Medical Students?</i></p> <ul style="list-style-type: none"> <li>Aaron Hollins James Cook University – Atherton Clinical School, Mulungu Aboriginal Corporation Medical Centre</li> </ul> <p><i>Engaging with the Community</i></p> <ul style="list-style-type: none"> <li>Gaye Doolan</li> <li>Amanda Barnard Australian National University</li> </ul> <p><i>Friends with Benefits: Should Community Play with us?</i></p> <ul style="list-style-type: none"> <li>Tania Huria University of Otago, Christchurch</li> </ul>

*DAY 3 continues next page*

## DAY 3 CONTINUED

12:15 – 1:00 pm	<b>Lunch – STK Restaurant</b> Ground Floor, Rydges Auckland <b>Posters and networking</b>
	<b>HOBSON (PLENARY) ROOM</b>
1:00 – 1:45 pm	<b>Plenary Panel</b> <b>Students and Recent Graduates</b> <i>Chair: Suzanne Pitama</i> <i>See Conference Program page 77</i> <ul style="list-style-type: none"><li>• Maia Melbourne-Wilcox (Graduate, The University of Auckland)</li><li>• Shannon Price (Graduate, Monash University)</li><li>• Danielle Arabena (Graduate, The University of Queensland)</li><li>• Lance Buckthought (Student, University of Otago, Dunedin)</li></ul>
1:45 – 2:00 pm	<b>Afternoon Tea</b> Lobby, Level 1, Rydges Auckland <b>Posters and Networking</b>

*DAY 3 continues overleaf*





## DAY 3 CONTINUED

	BREAKOUT ROOM 1 (KINGSTON ROOM 1–2)	BREAKOUT ROOM 2 (KINGSTON ROOM 3–4)
2:00 – 3:30 pm	<p><b>Teaching and Learning: Assessment</b>  <i>Chair: Shaun Ewen</i>  <i>See Conference Program page 79</i></p> <p><i>Revealing the Incompetency of ‘Cultural Competency’ in Medical Education; The Misleading Use of Competency as an Attainable Skill and as an Assumed Outcome</i></p> <ul style="list-style-type: none"> <li>David Paul</li> <li>Shauna Hill The University of Western Australia</li> </ul> <p><i>Assessing Māori Health in Clinical Settings</i></p> <ul style="list-style-type: none"> <li>Rhys Jones The University of Auckland</li> </ul> <p><i>How Much is Absorbed and Transformed? Transformative Unlearning in Cultural Safety Training in Health Care Education</i></p> <ul style="list-style-type: none"> <li>Courtney Ryder Flinders University, South Australia</li> </ul> <p><i>Measuring Learning Outcomes in IH: What is Working?</i></p> <ul style="list-style-type: none"> <li>Suzanne Pitama University of Otago, Christchurch</li> </ul>	<p><b>Teaching and Learning: Case Studies</b>  <i>Chair: Miriam Cavanagh</i>  <i>See Conference Program page 83</i></p> <p><i>Student-Led Experiential Learning Opportunity Towards Cultural Competency</i></p> <ul style="list-style-type: none"> <li>Daniel Irvine University of Saskatchewan</li> </ul> <p><i>An Indigenous Māori Case-Study Translating Theory to Practice in Medical Education</i></p> <ul style="list-style-type: none"> <li>Bernadette Jones</li> <li>Tristram Ingham University of Otago, Wellington</li> </ul> <p><i>Pihtokwâhiwewin: The Development of an Aboriginal Health and Healing Curriculum at the University of Saskatchewan</i></p> <ul style="list-style-type: none"> <li>Serene Smyth</li> <li>Valerie Arnault-Pelletier</li> <li>Veronica McKinney University of Saskatchewan</li> </ul> <p><i>Rethinking the Yarn: Redesigning Cultural and Communications Training for Medical Students</i></p> <ul style="list-style-type: none"> <li>Lisa Jackson Pulver The University of New South Wales</li> </ul>
	<b>HOBSON (PLENARY) ROOM</b>	
3:30 – 4:00 pm	<p><b>Closing Comments and Ways Forward to LIME Connection V</b>  <i>Chairs: Papaarangi Reid, Suzanne Pitama</i></p>	
4:00 – 5:00 pm	<p><b>Closing Drinks</b>  Rydges Auckland Rooftop (Access via Level 10)</p> <ul style="list-style-type: none"> <li>Networking, Musical Performance: Campbell Rehu (The University of Auckland)</li> </ul>	